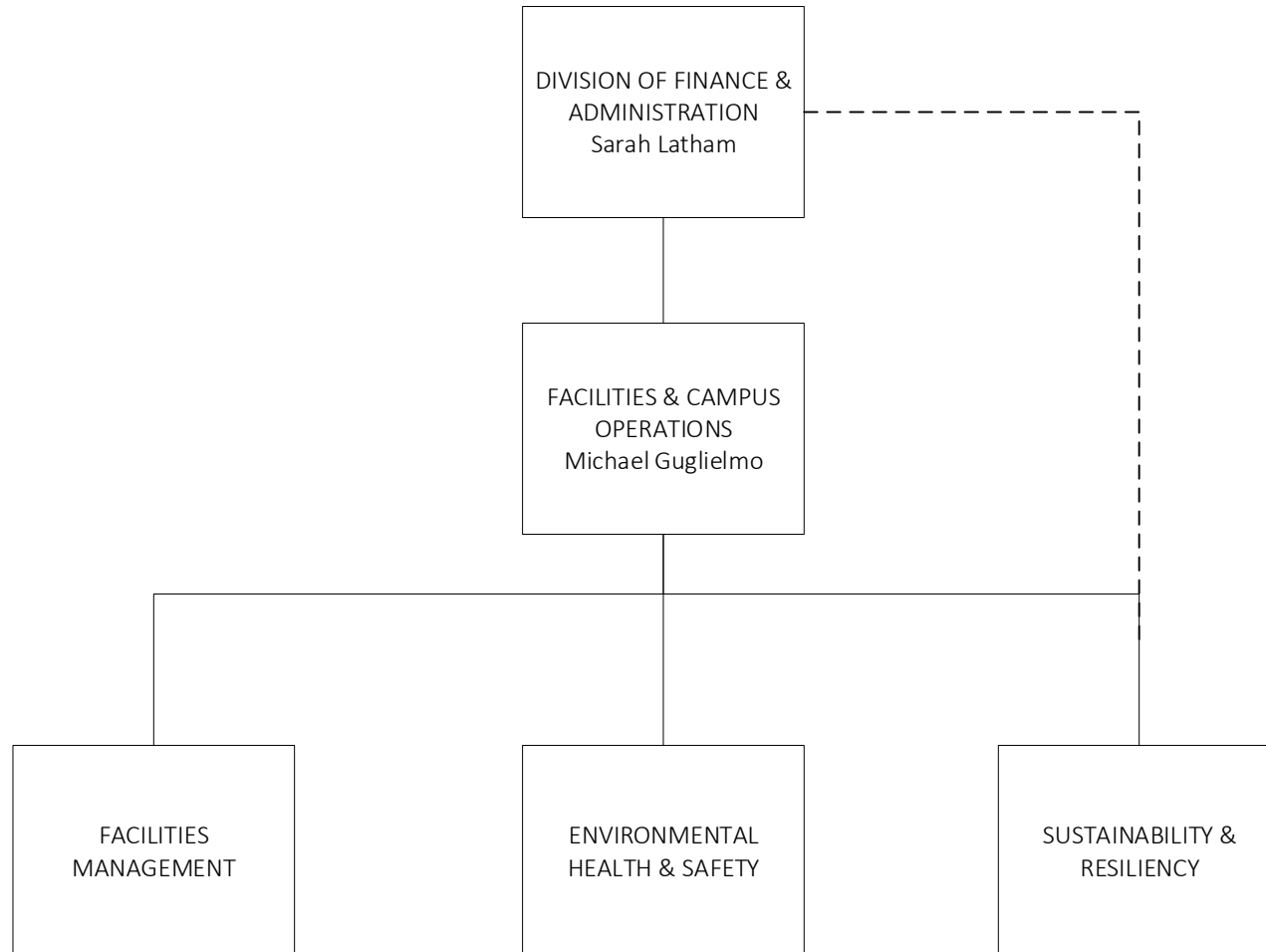
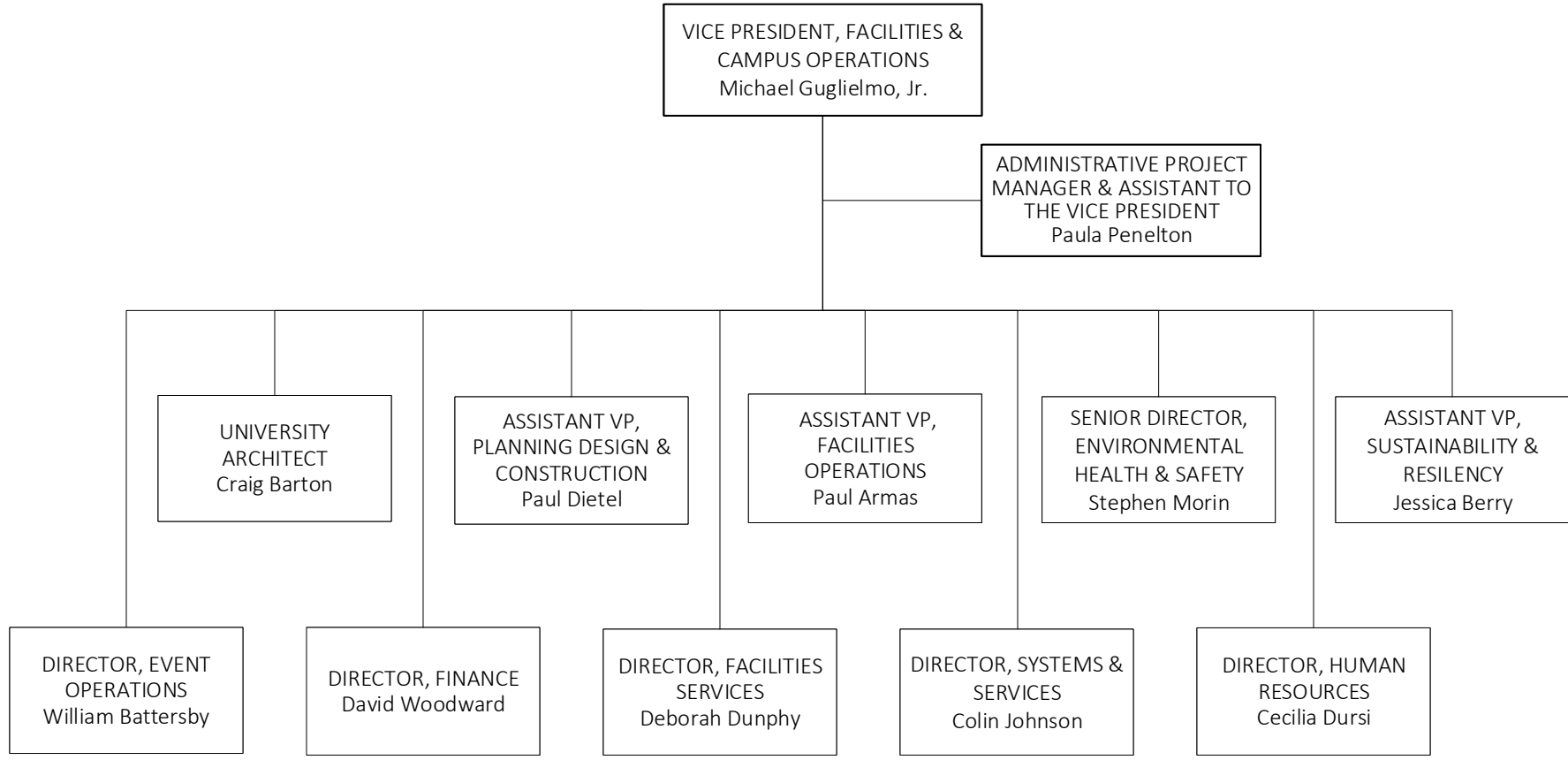


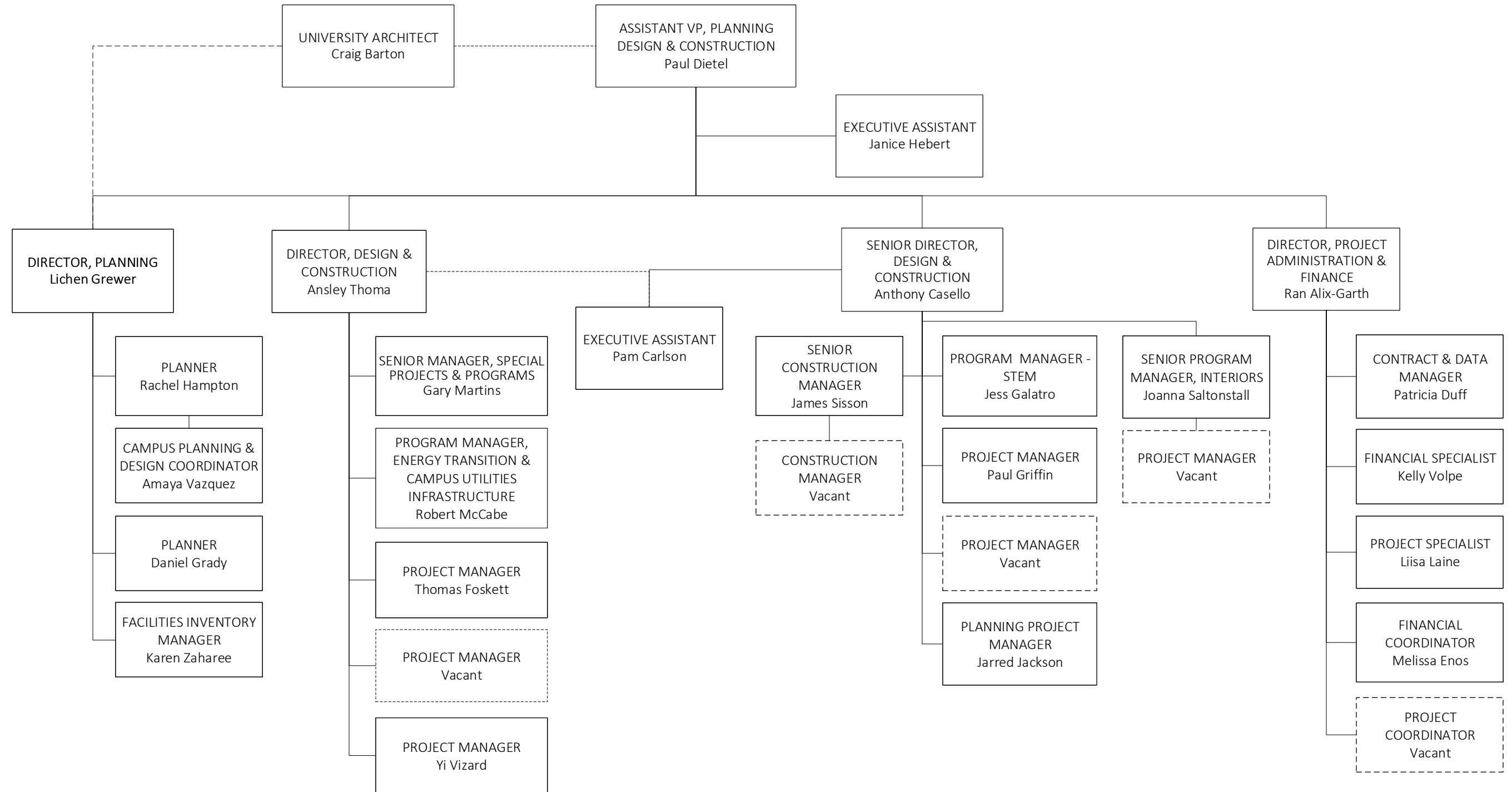
## FACILITIES & CAMPUS OPERATIONS





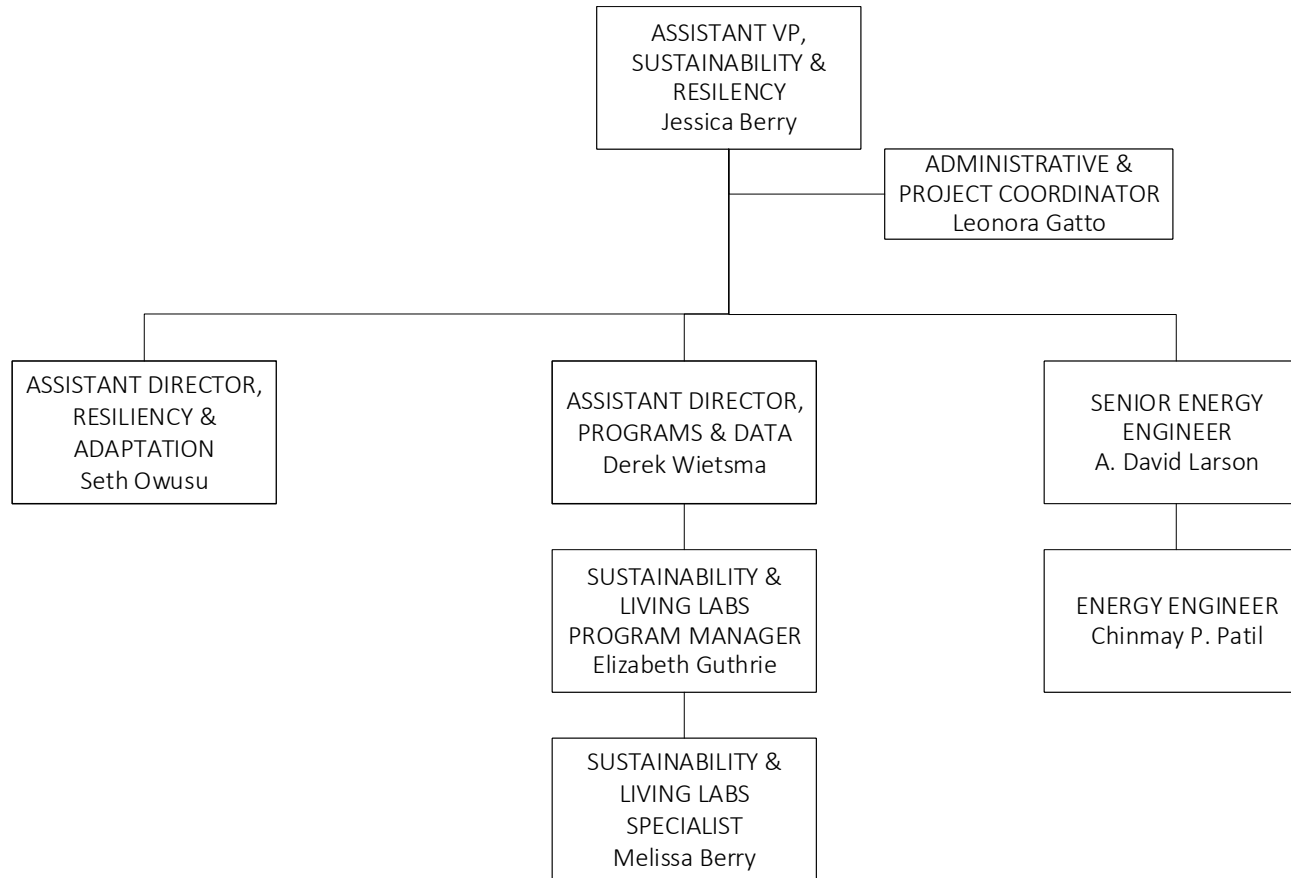


## PLANNING, DESIGN, & CONSTRUCTION (PD&C)



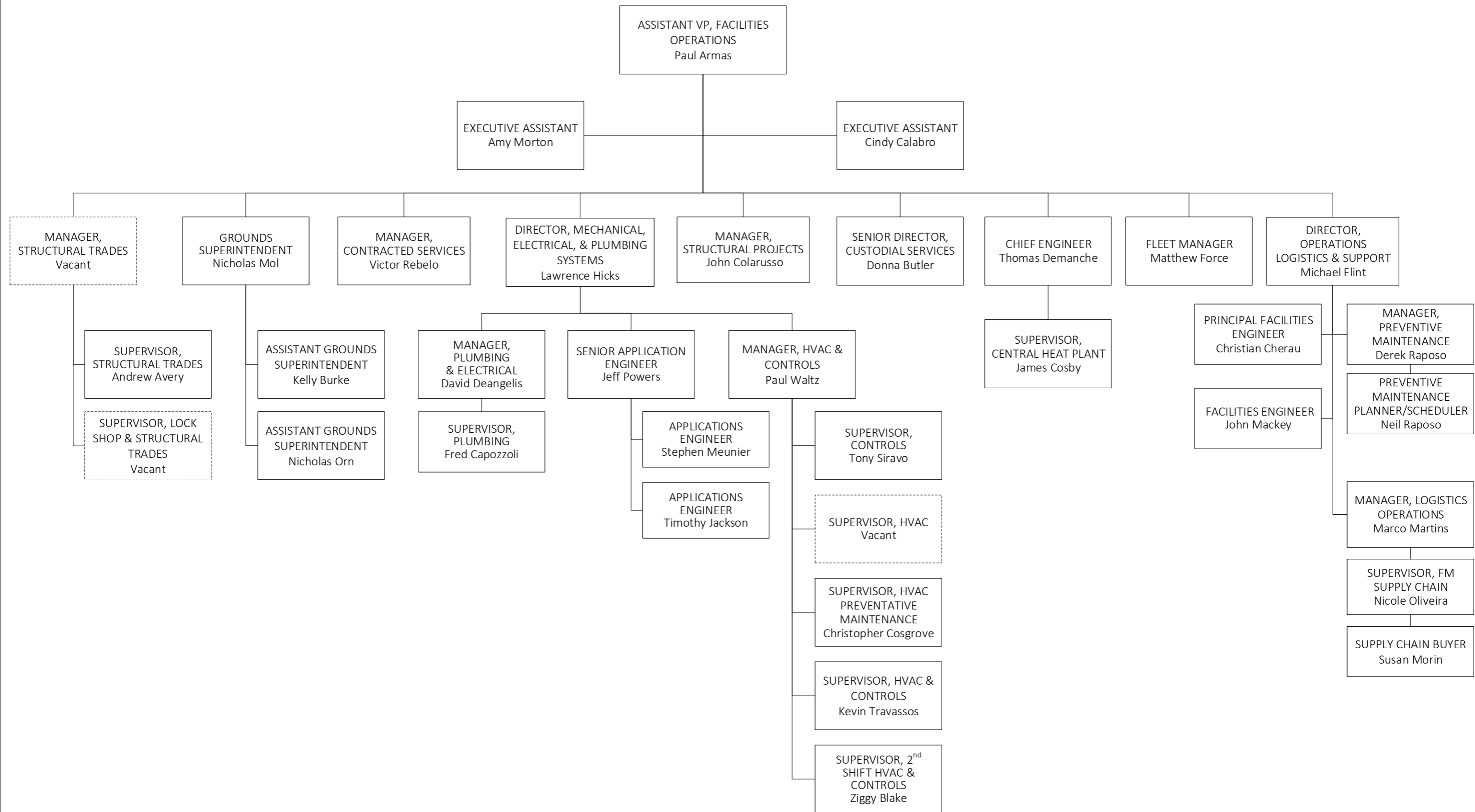


## SUSTAINABILITY & RESILIENCY



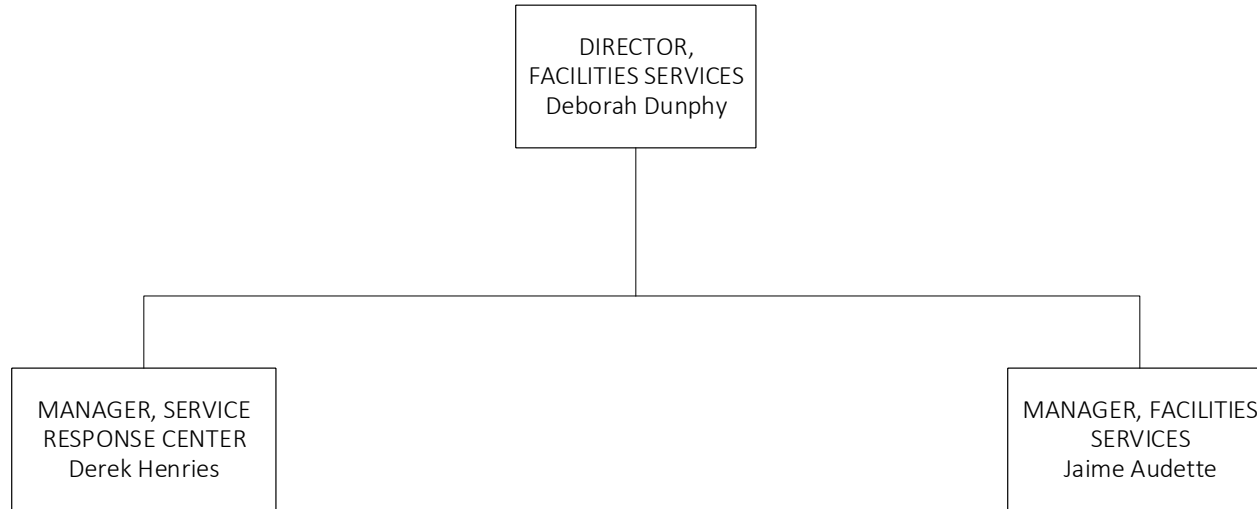


**FACILITIES OPERATIONS**

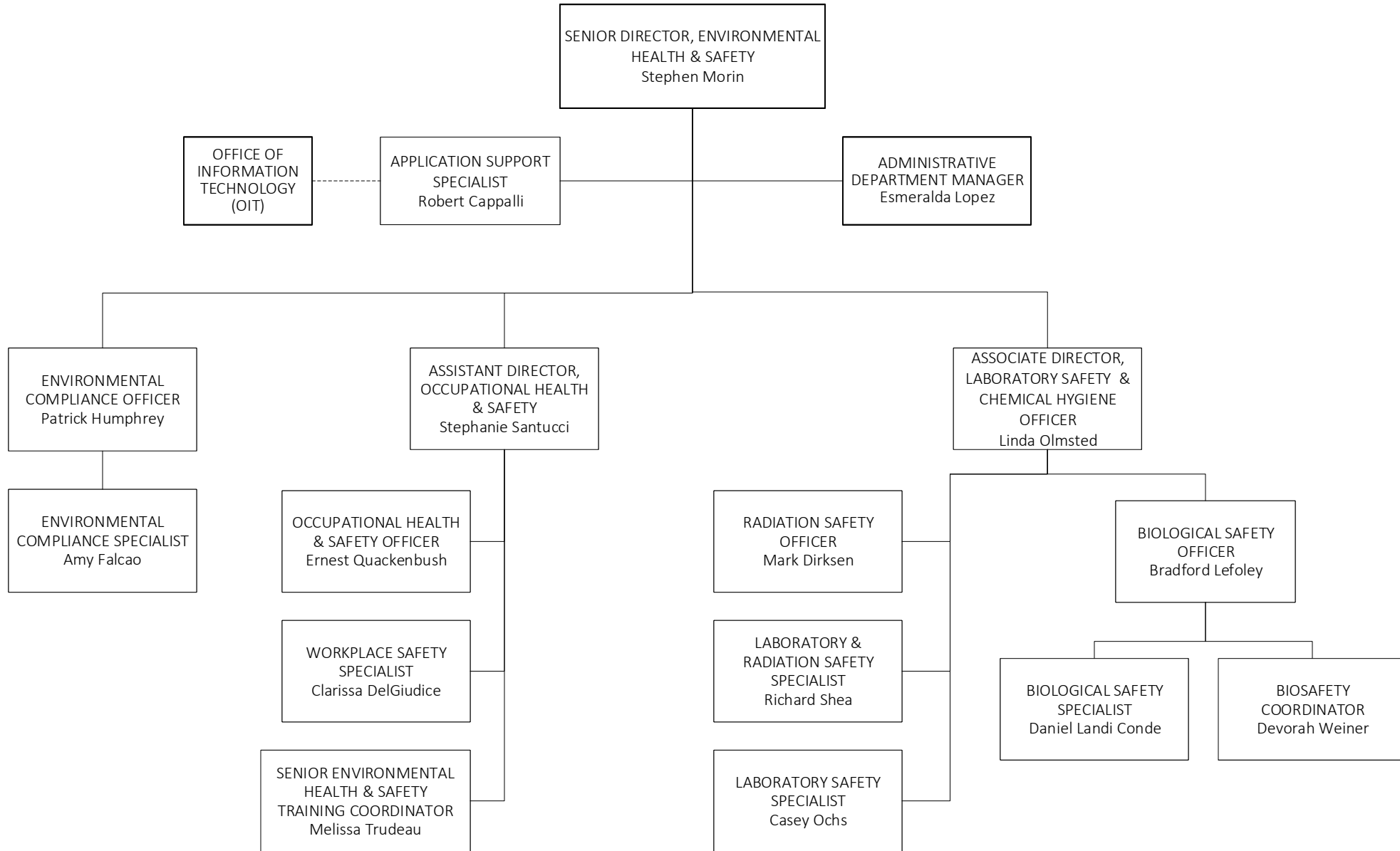




## FACILITIES SERVICES

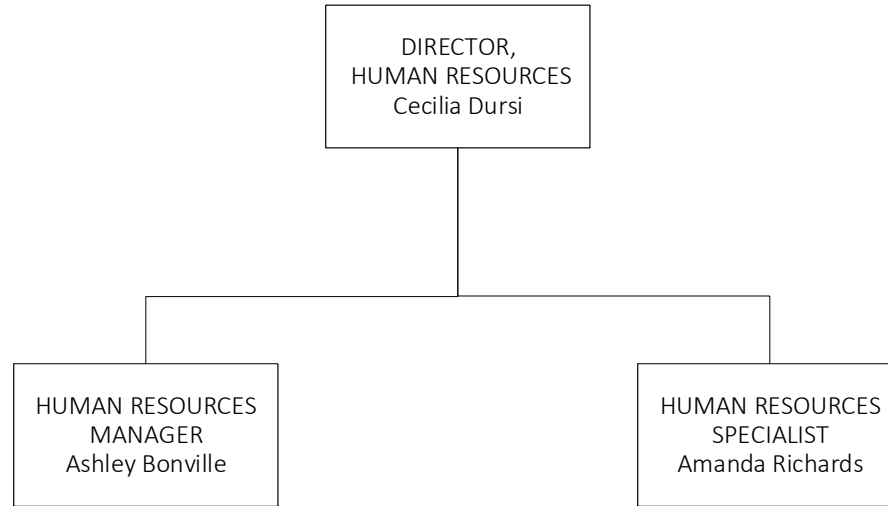


## ENVIRONMENTAL HEALTH & SAFETY (EH&S)





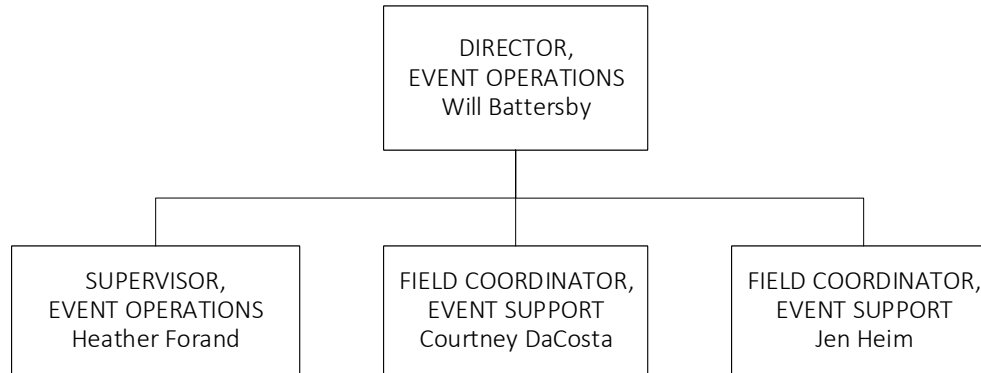
## HUMAN RESOURCES





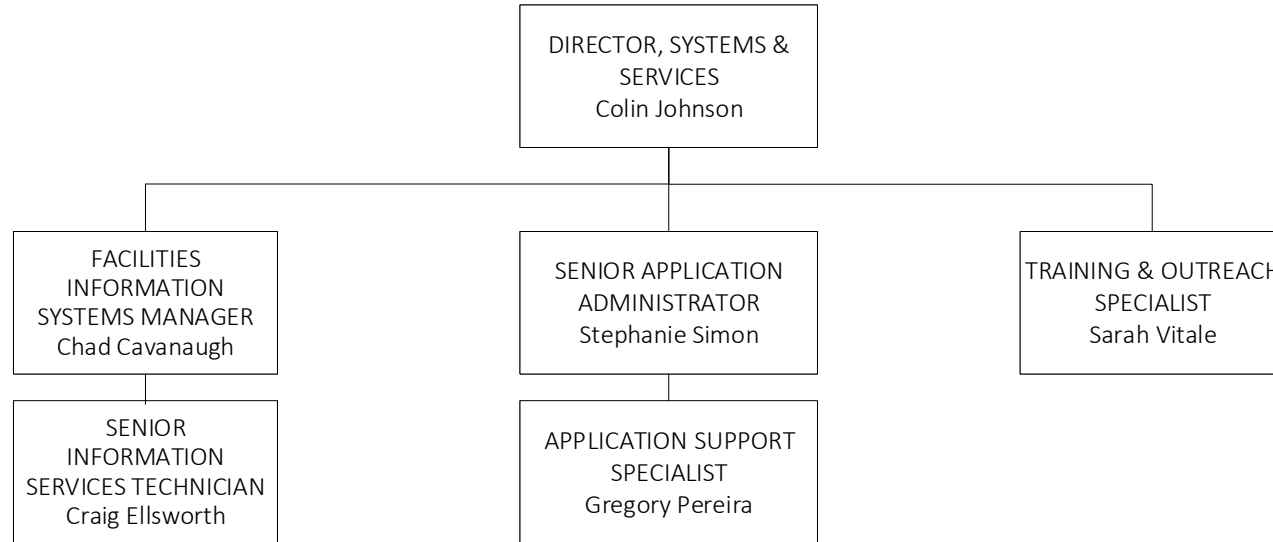


## EVENT OPERATIONS

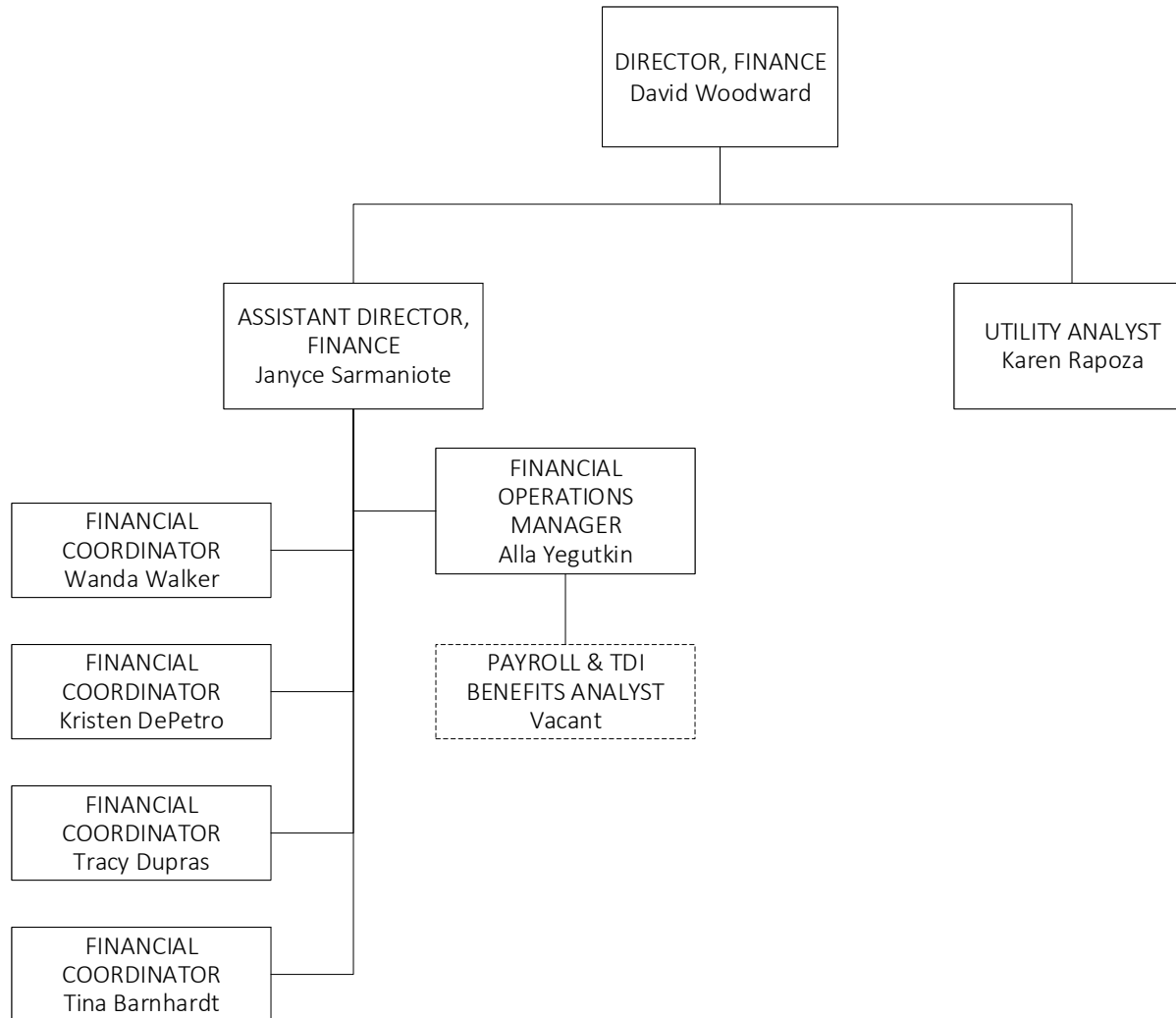




## SYSTEMS & SERVICES



## FINANCE



## CUSTODIAL SERVICES

